



**Climbing St. Helens
Circa 1969**



**Sabbatical with Dick Epstein
1970**



Alfred Tissiers



Charles Hall

Dick Epstein

Kay Fields

Eidh

Ben

Margaret

**Sabbatical with Dick Epstein
1970**

Anne Hall



Breck Byers

Eukaryotes—Small to Large: Genome Evolution, Cell Biology & Molecular Medicine

*in honor of Dr. Benjamin D. Hall
for his 75th birthday*

Speakers:

Dissecting functions for protein phosphatase I in the yeast nucleus Kelly Tatchell, Louisiana State University

Into osmotic stress Gustav Ammerer, University of Vienna

Retrograde nuclear accumulation of cytoplasmic tRNA—a conserved response to nutrient deprivation Anita Hopper, Ohio State University

Ty3 now and then Suzanne Sandmeyer, University of California, Irvine

Regulation of alcohol metabolism in yeast Ted Young, University of Washington

Cellular responses to genotoxic and cytotoxic stress in fission yeast Paul Russell, The Scripps Research Institute

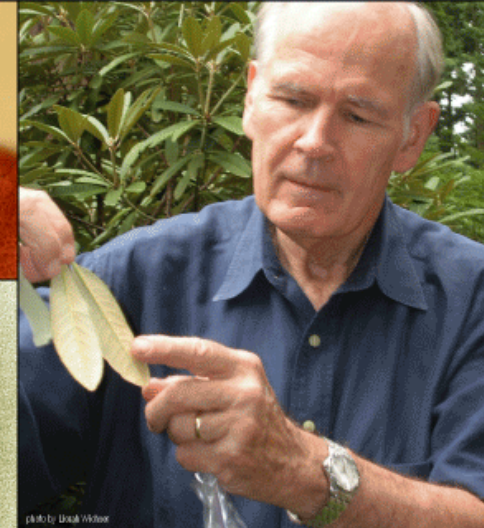
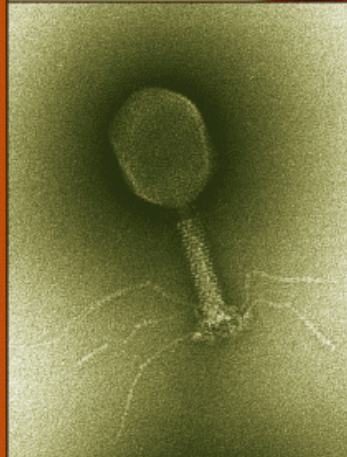
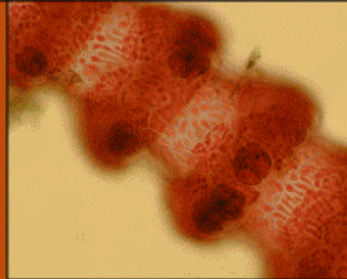
Saccharomyces* is for sissies: the genomes of *Candida albicans* and *Candida dubliniensis Pete Magee, University of Minnesota

The evolutionary adaptation of fungi from water to land: how many times were the flagella lost in the fungal lineage? Yajuan Liu, University of Washington

Functional constraint on the evolution of the RNA polymerase II C-terminal domain John Stiller, East Carolina University

Genes, environment or chance—which one determines longevity most? Tom Johnson, University of Colorado at Boulder

Histone dynamics and epigenetics in plants and animals Steve Henikoff, Fred Hutchinson Cancer Research Center



A theme that has run through Ben's research throughout his career has been transcription and RNA polymerase. He initiated this interest using bacteriophage, moved on to yeast, and more recently to plants, in particular rhododendrons. Ben's graduate students, postdoctoral fellows and collaborators from throughout Ben's career are gathering to celebrate by