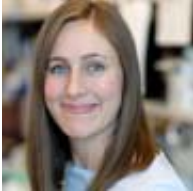




Genome Sciences Seminar

Wednesday, 3.6.24 | 3:30 | Foegen Auditorium

remote viewing option: <https://depts.washington.edu/gstrestrc/remote.htm>



Dr. Ashley Laughney

Assistant Professor

Weill Cornell Medicine

<https://laughneylab.com/>

“Tackling the genotype-to-phenotype problem in cancer evolution”

Using an integrated systems biology approach, the Laughney Lab develops innovative tools that systematically map genome-encoded components to context-dependent cellular and *in vivo* functions at the protein, cell and multi-cellular level. We apply these emerging techniques to understand how highly pleiotropic regulators can adapt multiple functions (both tumor-suppressive and pro-tumoral) during the evolution of cancer metastasis.

Questions? Contact Brian Giebel at bgiebel@uw.edu or visit the Seminar website at <http://www.gs.washington.edu/news/seminars.htm>

The University of Washington is committed to providing access, equal opportunity and reasonable accommodations in its services, programs, activities, education and employment of individuals with disabilities. To request disability accommodations contact the Disability Services Office at least ten days in advance at: 206.543.6450/V, 206.543.6452/TTY, 206.685.7264 (FAX), or e-mail at dso@u.washington.edu