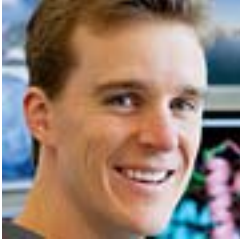


Combi Seminar

Wednesday, 1.17.18 | 1:30 | Foege Auditorium



Dr. Phil Bradley

Associate Member, Fred Hutchinson Cancer Research Center
Affiliate Associate Professor of Biochemistry and of Genome
Sciences

<https://www.fredhutch.org/en/labs/profiles/bradley-phil.html>

“Analysis of T cell receptor repertoires reveals signatures of epitope specificity”

Questions? Contact Brian Giebel at bgiebel@uw.edu or visit the Combi website at <http://www.gs.washington.edu/news/combi.htm>

The University of Washington is committed to providing access, equal opportunity and reasonable accommodations in its services, programs, activities, education and employment of individuals with disabilities. To request disability accommodations contact the Disability Services Office at least ten days in advance at: 206.543.6450/V, 206.543.6452/TTY, 206.685.7264 (FAX), or e-mail at dso@u.washington.edu